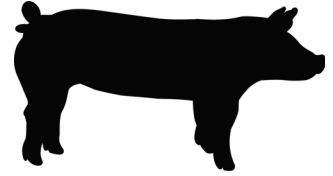
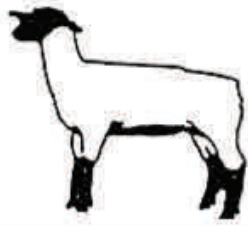
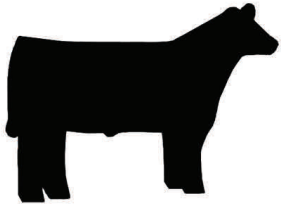


# Gary Fuller Spring Classic

*On the Lyon County Fairgrounds*



May 7-8, 2016, Lyon County Fairgrounds, Emporia, KS

Pre-Entries due April 29 • \$15 per head

\$25 per head after April 29

---

## SCHEDULE:

### Saturday, May 7 — sheep, goats and beef

9:00-9:30 a.m.	Sheep Weigh-in/Breeding Check-in
10:00-10:30 a.m.	Meat Goat Weigh-in/Breeding Check-in
10:30 a.m.	Sheep Show
12:00 p.m.	Goat Show (or 30 minutes after Sheep Show)
3:00-4:30 p.m.	Market Beef weigh-in & breeding heifer check-in
4:00 p.m.	Bucket Calf Check-in
4:15 p.m.	Bucket Calf Show
5:30 p.m.	Beef Show — show order: heifers, showmanship, Lyon County only class, followed by market

★ We host a no-fit show — no paint/no adhesive ★

### Sunday, May 8 — swine

7-8:30 a.m.	Scales Open (exhibitors weigh own hogs)
9:00 a.m.	Swine Show — beginning with showmanship

The Bluestem Farm & Ranch Supply Prize Trailer will be available for awards.  
Champion prospect market hog will receive a Gary Fuller Spring Classic buckle!

All other prospect market grand champions and reserve grand champions will  
receive embroidered chairs!

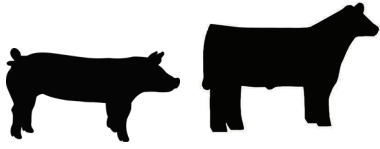
Open to 4-H/FFA youth ages 7 to 18 (4-H age) exhibiting sheep, meat  
goats, market steers and heifers, breeding heifers, bucket calves and swine

Entry forms available online at [www.lyon.ksu.edu](http://www.lyon.ksu.edu)

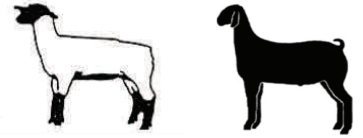


For more information contact:  
Lyon County Extension Office  
2632 W Hwy 50  
Emporia, KS 66801  
(620) 341-3220





# Gary Fuller Spring Classic



## 2016 Show Guidelines

Show coordinators reserve the right to keep any individual from showing in the Gary Fuller Spring Classic for any reason they deem necessary.

### Health Requirements:

- Show officials reserve the right to remove any animal from the grounds if it appears diseased, emaciated or extremely unthrifty. All animals are subject to examination by show officials/representatives. If infected animals are found, the entire trailer will be sent home.

### Sheep/Meat Goats:

- No bedding is allowed - Mats only. Bring generators.
- Exhibitors must show their own animal for showmanship classes.
- All market classes will be weighed and divided into classes by weight only.
- Five head or more of a breed will constitute a ewe class.
- All animals must be identified with a registered tattoo or an official USDA premise ID tag. Kids or lambs, under 8 weeks of age, accompanying their dams, are exempt from identification/tagging requirements.
- Animals shown in Market classes are not eligible to show in breeding classes. Market lambs may be ewes or wethers and must be slick shorn. No artificial coloring allowed.

### Beef:

- No-fitting allowed (no paint/no adhesive)
- All market classes will be weighed and divided into classes by weight and breed. Breeding heifers cannot shown as market heifers.
- Must have 3 head to make a breed class.
- Heifers must have registration papers to show in a breed class.
- Exhibitors must show their own animal for showmanship classes.
- No bucket calves in showmanship classes.

### Swine:

- All market classes will be weighed and divided into classes by weight and breed.
- Must have 5 head to make a breed class.
- Exhibitors must show their own animal for showmanship classes.

### Show order/Class No.

There will be no charge for showmanship classes.

#### Saturday, May 7

##### Sheep:

- Class 1 — Showmanship 14 & Over
- Class 2 — Showmanship 10-13
- Class 3 — Showmanship 7-9

##### Breed Show — Dorset

- Class 4 — Ewe Lamb
- Class 5 — Yearling Ewe

##### Breed Show — Hampshire

- Class 6 — Ewe Lamb
- Class 7 — Yearling Ewe

##### Breed Show — Suffolk

- Class 8 — Ewe Lamb
- Class 9 — Yearling Ewe

##### Breed Show — Crossbred

- Class 10 — Ewe Lamb
- Class 11 — Yearling Ewe

##### Breed Show — AOB

- Class 12 — Ewe Lamb
- Class 13 — Yearling Ewe

##### Supreme Ewe

**Prospect Market Show** (110 lb. wt. limit for champion)

- Class 14 — All breeds
- Class 15 — Lyon Co. Market Lambs

---

#### Meat Goats:

- Class 16 — Showmanship 14 & Over
- Class 17 — Showmanship 10-13
- Class 18 — Showmanship 7-9
- Class 19 — Prospect Meat Goats, classes broken by weight
- Class 20 — Lyon Co. Meat Goats

---

#### Breeding Doe

- Class 21 — 0-6 months
- Class 22 — 7-12 months
- Class 23 — 13-24 months

---

#### Beef:

Class 24 — bucket calves

#### Heifers (5 head/breed or show AOB):

- Class 25 — Angus
- Class 26 — Red Angus
- Class 27 — Brangus

#### Heifers, cont.:

- Class 28 — Commercial
- Class 29 — Charolais
- Class 30 — Chianina
- Class 31 — Gelvieh
- Class 32 — Hereford
- Class 33 — Limousin
- Class 34 — AOB
- Class 35 — Maine Anjou
- Class 36 — Shorthorn
- Class 37 — Simmental

#### Showmanship

- Class 38 — Showmanship 14 & Over
- Class 39 — Showmanship 10-13
- Class 40 — Showmanship 7-9

#### Market Steers (3head/breed or show under crossbred):

- Class 41 — Lyon County only Market Steer/Market Heifer
- Class 42 — Angus
- Class 43 — Brangus
- Class 44 — Red Angus
- Class 45 — Appendix Shorthorn
- Class 46 — Charolais
- Class 47 — Chianina
- Class 48 — Gelvieh
- Class 49 — Hereford
- Class 50 — Limousin
- Class 51 — Maine Anjou
- Class 52 — Shorthorn
- Class 53 — Simmental
- Class 54 — Crossbred

#### Market Heifers:

- Class 55 — AOB

---

#### Sunday, May 8

##### Swine:

- Class 56 — Showmanship 14 & Over
- Class 57 — Showmanship 10-13 Years
- Class 58 — Showmanship 7-9 Years
- Class 59 — Duroc
- Class 60 — Hampshire
- Class 61 — Yorkshire
- Class 62 — Crossbred
- Class 63 — AOB
- Class 64 — Lyon County Swine Class (all breeds, all weights — Lyon County 4-Hers only)

---

Exhibitors are to be 4-H/FFA youth ages 7 to 18 (4-H age).

The Lyon County Extension Office and all concerned are not responsible in case of accident or injury.

# Gary Fuller Spring Classic REGISTRATION FORM



**Pre-Entries Must be Postmarked by Friday, April 29, 2016**

**One Exhibitor per Entry Form**

Name: \_\_\_\_\_

Address \_\_\_\_\_

City, State, Zip \_\_\_\_\_

Phone: \_\_\_\_\_ Age as of 01/01/16: \_\_\_\_\_

**\*\*No Fee for Showmanship or “Lyon County Only” Classes,  
But You Still Must Register for Those Classes \*\***

All Other Classes \$15 each, and \$25 after April 29 and day of show

SPECIES	CLASS or CLASS No.	DOB (breeding classes only)	BREED	TAG #	FEE
<b>TOTAL FEE DUE:</b>					

**Make Checks Payable to: “Lyon County 4-H Council”**

Return Entry Form Along With Payment To:

Lyon County Extension Office  
2632 W. Highway 50  
Emporia, Kansas 66801